

RELIABLE | COMPACT | ROBUST



INDUSTRIAL DRIVE COUPLINGS

FOR THE MOST DEMANDING POWER TRANSMISSION APPLICATIONS.

RW-COUPLINGS.COM

THE COUPLING.



HIGH TORQUE COUPLINGS: THE POWERPACK

AREAS OF APPLICATION:

For torque overload protection in:

- ▶ wood processing equipment
- ▶ test stands
- ▶ extruders
- ▶ mining equipment
- ▶ aggregate processing machinery
- ▶ industrial shredders
- ▶ feeders and conveyors
- ▶ tunnel boring machinery
- ▶ large pump packages

OTHER R+W COUPLINGS

Aside from the products detailed in this catalog, we also offer high precision shaft couplings and torque limiters for servo and stepper driven automation systems.

More information on these can be found in our
▶ **PRECISION COUPLINGS** catalog.



ST

HIGH TORQUE-
SAFETY COUPLINGS
SIZES FROM 2,000 - 165,000 Nm
BORE DIAMETERS FROM 40 - 290 mm

FEATURES ST

- ▶ compact, simple design
- ▶ complete separation at torque overload
- ▶ easy re-engagement without special tools
- ▶ optional automatic re-engagement system
- ▶ modular design for wide range of disengagement torques
- ▶ field adjustable torque settings
- ▶ available in a variety of mounting arrangements

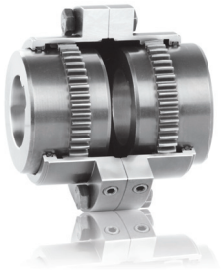


BX

TORSIONALLY STIFF
BELLOWS COUPLINGS
SIZES FROM 10,000 - 100,000 Nm
BORE DIAMETERS FROM 50 - 280 mm

FEATURES BX

- ▶ high torsional stiffness
- ▶ low restoring forces from misalignment
- ▶ low and zero maintenance options
- ▶ low windup from heavy torsional winding
- ▶ available with intermediate spacer for increased misalignment

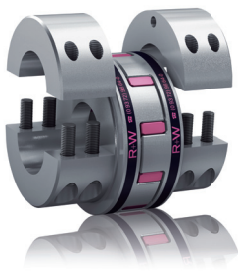


BZ

FLEXIBLE
GEAR COUPLINGS
SIZES FROM 1,300 - 348,000 Nm
BORE DIAMETERS FROM 10 - 275 mm

FEATURES BZ

- ▶ high power density
- ▶ very low backlash
- ▶ economically priced
- ▶ low maintenance due to special crowned tooth design



EK

BACKLASH FREE
ELASTOMER COUPLINGS
SIZES FROM 1,950 - 25,000 Nm
BORE DIAMETERS FROM 30 - 170 mm

FEATURES EK SERVOMAX®

- ▶ vibration damping
- ▶ electrically isolating
- ▶ backlash free
- ▶ calibrated preloaded insert
- ▶ concentrically machined hubs

R+W ANTRIEBSELEMENTE GMBH

ALEXANDER-WIEGAND-STRASSE 8
D-63911 KLINGENBERG
WWW.RW-COUPPLINGS.COM

PHONE: +49 9372 9864-0
FAX: +49 9372 9864-20
INFO@RW-KUPPLUNGEN.COM

Presented by:

Version: 01/2014

QUALITY MANAGEMENT
We are certified



according to ISO 9001:2008

D-ZM-16029-01-01 Registration No. 40503432/3

The information included in this document is based on our present knowledge and experience and does not exclude the manufacturer's own substantial testing of the products. Therefore we do not guarantee protection against third party claims. The sale of our product is in accordance with our general terms and conditions.